

# City / School Committee Design Development Update



March 7, 2013

nexus partners

City-School Committee  
ECCL  
Design Development



# EMERYVILLE CENTER of COMMUNITY LIFE

## Presentation Outline:

1. Design Development Update
2. Engagement & Design Process Review
3. Next Steps







COMMUNITY ENTRY ←

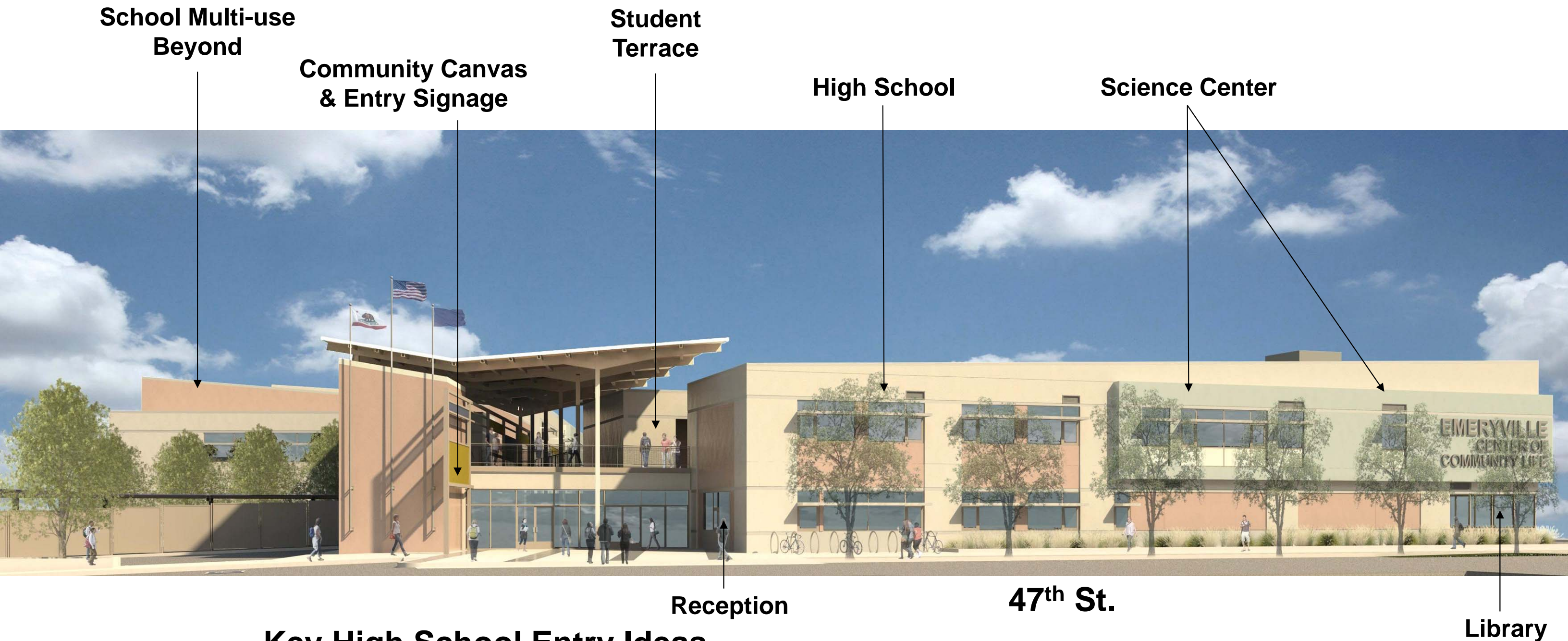
SCHOOL ENTRY ←



Aerial View

City-School Committee  
ECCL  
Design Development





### Key High School Entry Ideas

- Spine of Community Canvas aligned with valley of canopy - connecting High School to entire ECCL campus
- View through exterior covered entry to Commons beyond
- Direct visual control of entry from Safety office & Reception





**High School  
Classrooms  
(2<sup>nd</sup> floor)**



**Library & Café  
(1<sup>st</sup> floor)**



**Commons Beyond**

**Library & Café Plaza with  
outdoor seating (Public)**

**Community Services  
& EUSD Admin  
(1<sup>st</sup> floor)**

### **Key Portal Ideas:**

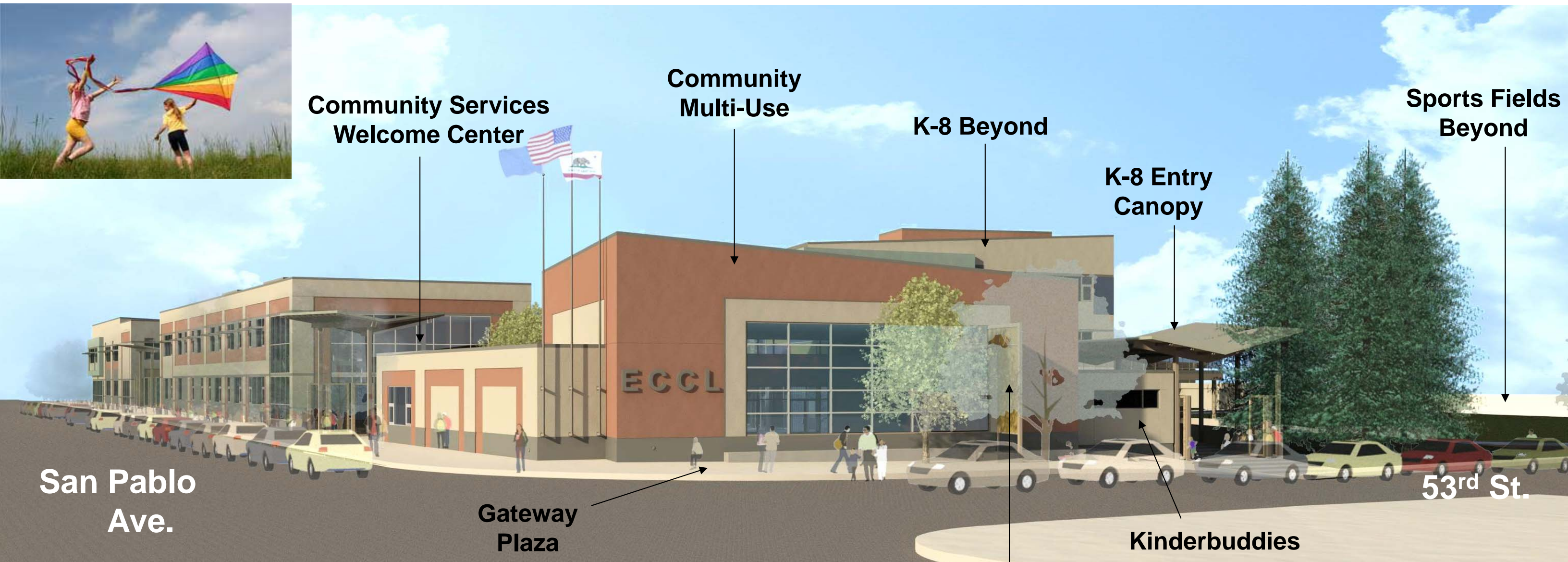
- **Frames entry to Commons & Community / School Library**
- **Provides Public Plaza by Café & Library during school day when Commons is reserved for school use**
- **Provides for security control point with visibility of both street and Commons**



## **Public Entry Portal: Library Courtyard**

**City-School Committee  
ECCL  
Design Development**





## Key 53<sup>rd</sup> & San Pablo Corner Ideas

- Gateway Plaza – a “Lantern” for Emeryville
- North end of Community Canvas acts as a signpost for ECCL
- Controlled gates at street allow safe K-8 play space inside Entry Courtyard
- KinderBuddies space accessible from K-8 Entry and Comm. Multi-Use



Corner of 53<sup>rd</sup> & San Pablo

City-School Committee  
ECCL  
Design Development

March 7, 2013



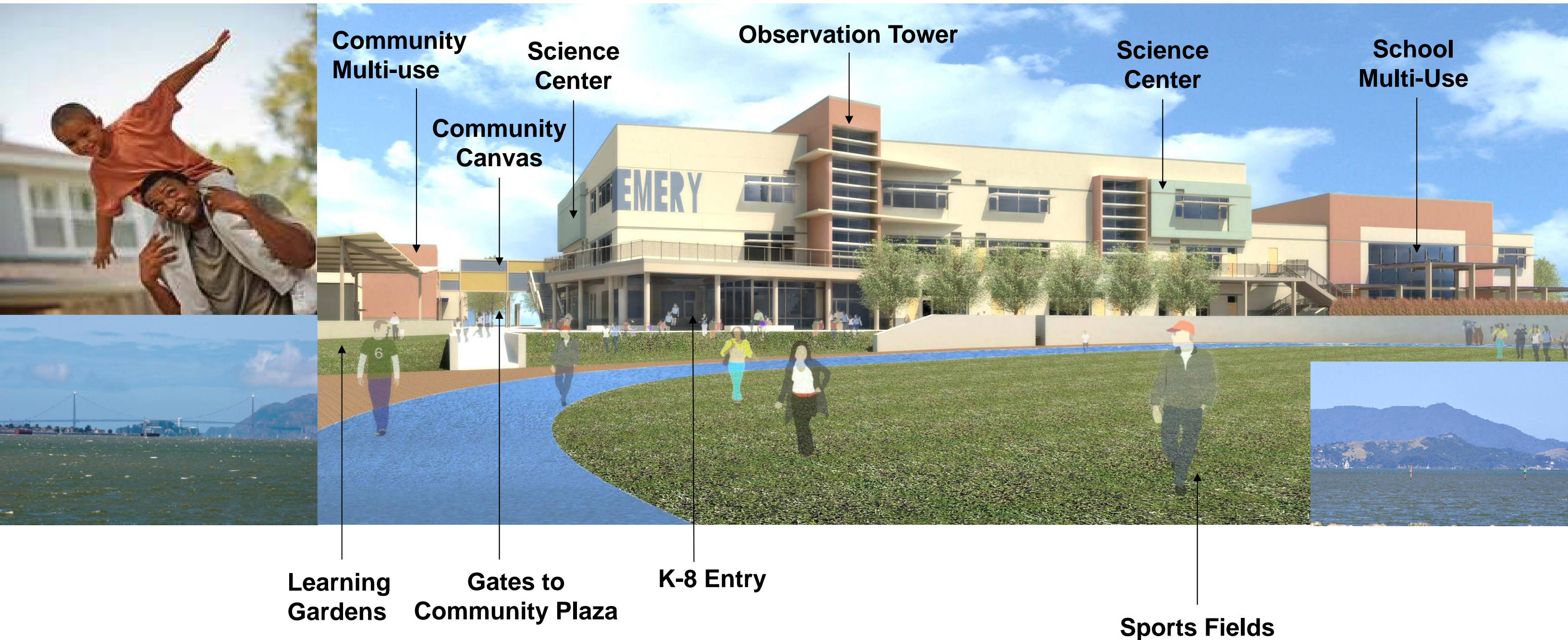


## Evening - Corner of 53<sup>rd</sup> & San Pablo

March 7, 2013

City-School Committee  
ECCL  
Design Development





## K-8 School

- Learning Gardens are adjacent to Entry drop off and play area
- Science Center prominently located at entry, with direct access to Learning Garden, Commons, and Lobby
- Tower offers views toward SF Bay, Golden Gate Bridge and Mt. Tamalpias





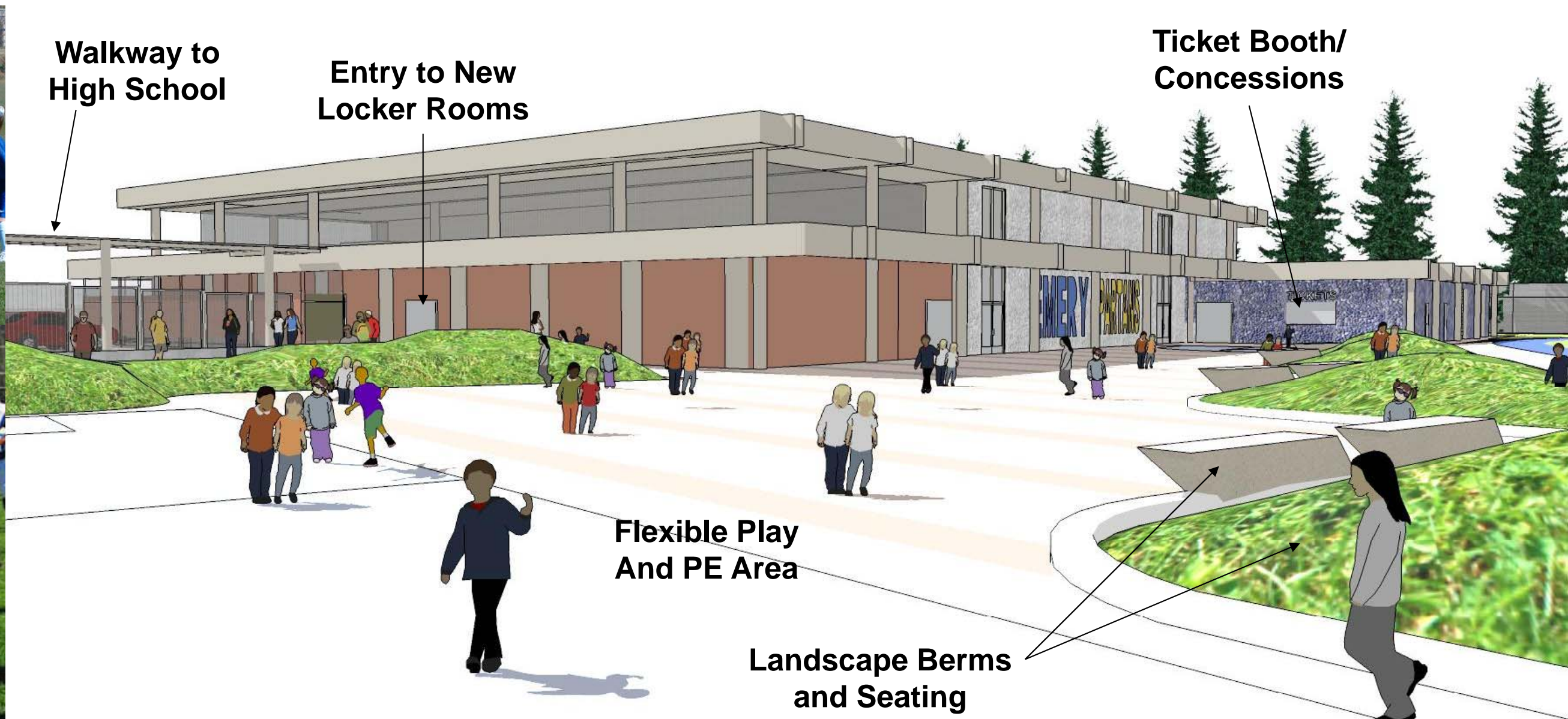
### Key Community Commons Ideas

- Commons supports a wide variety of users, uses and events
- Controlled, safe & comfortably scaled space
- Commons used by K-8 students during school day

Plaza with outdoor seating & play structure



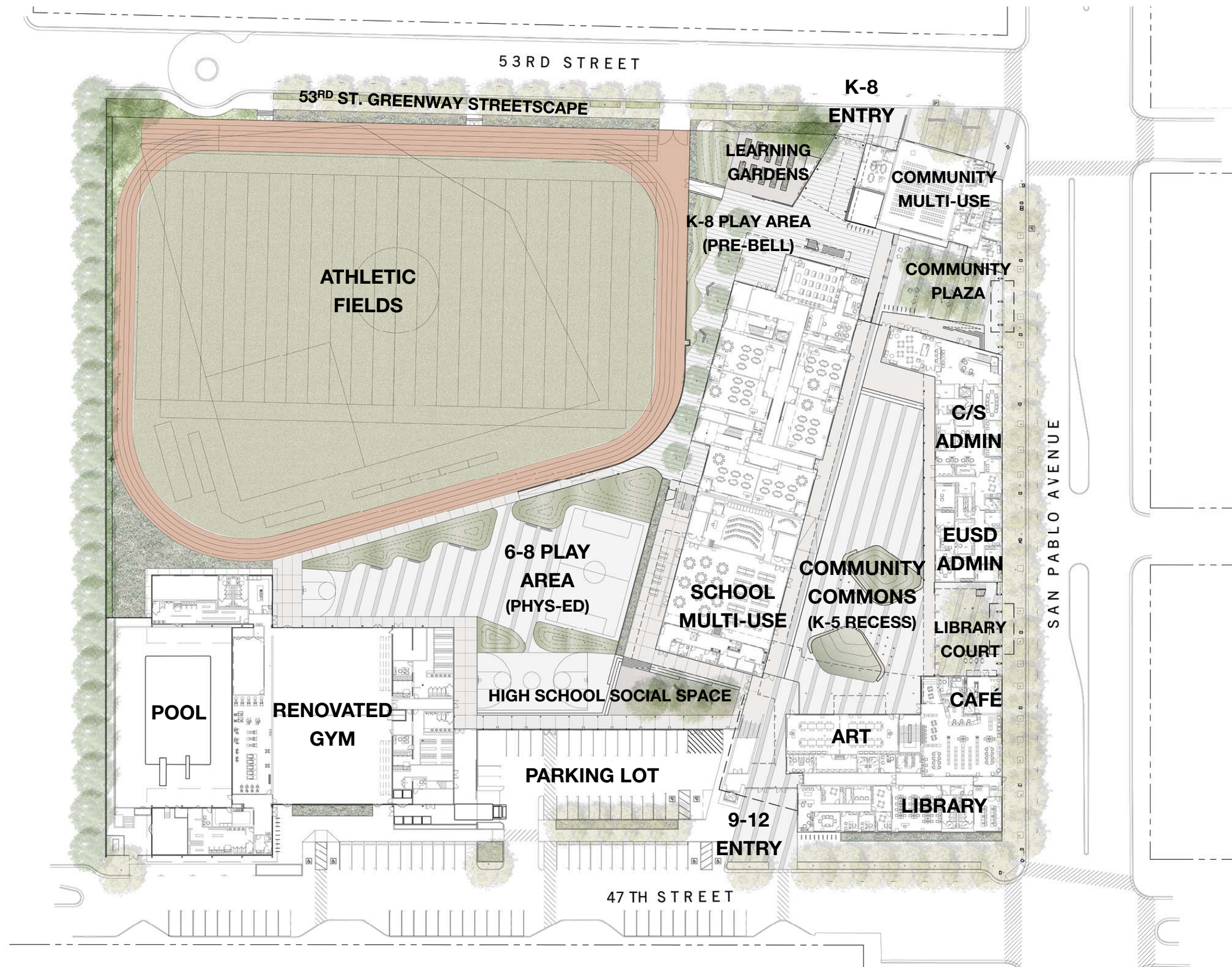




## Renovated Gym

- Seismic upgrade and interior renovation of existing structure
- New covered walkways connect K-12 campus to new school Locker Rooms
- Play fields expand PE program and sporting event opportunities

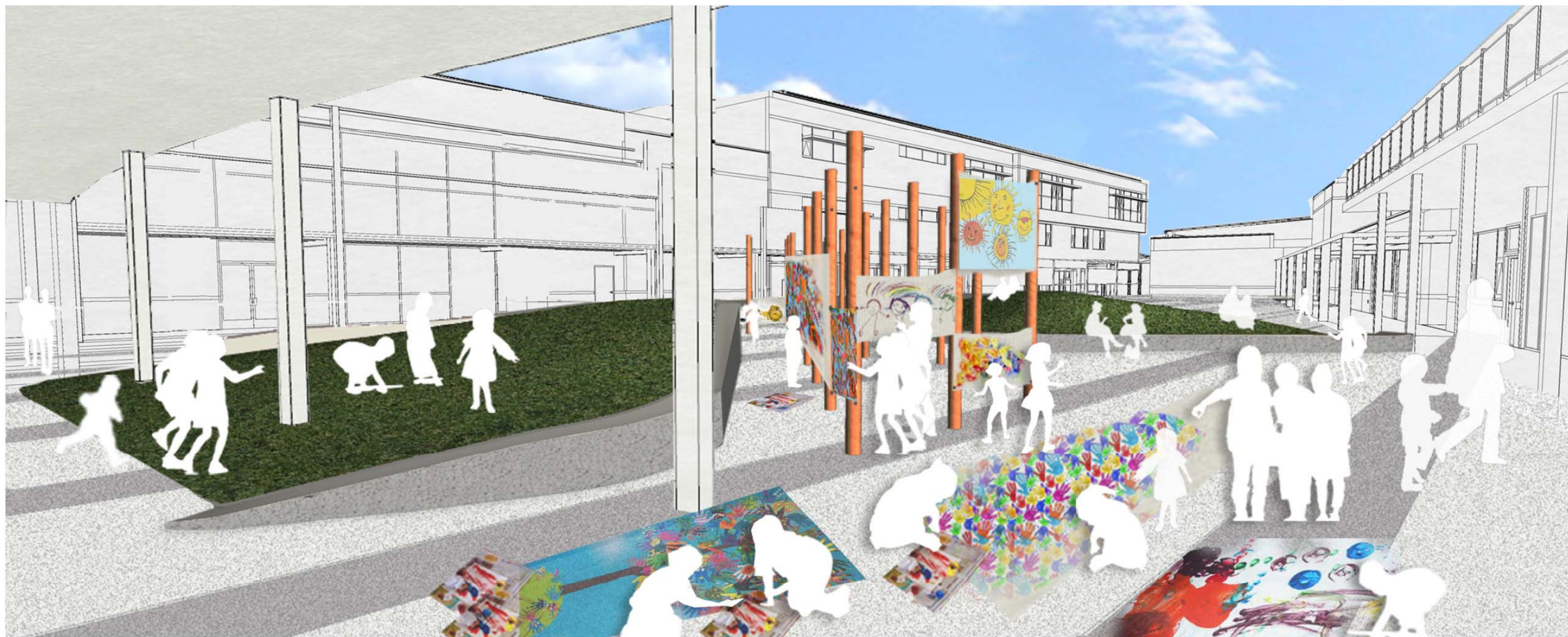




## Key Concepts

- Outdoor environment offers a variety of flexible spaces
- North-south Paving pattern reinforces alignment of Community Canvas
- Berms and mounds help direct movement and create separation between user groups
- Enhanced streetscape

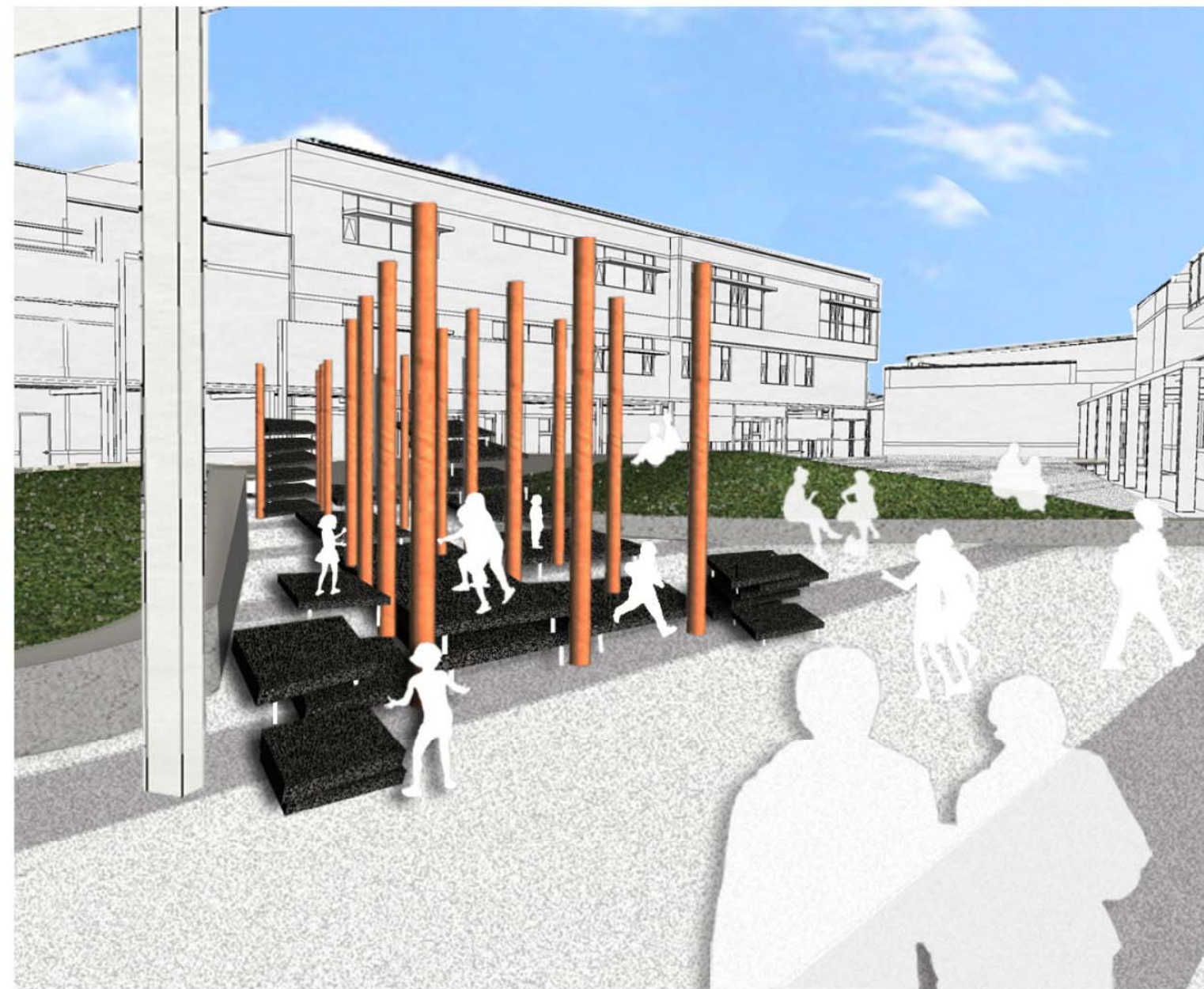
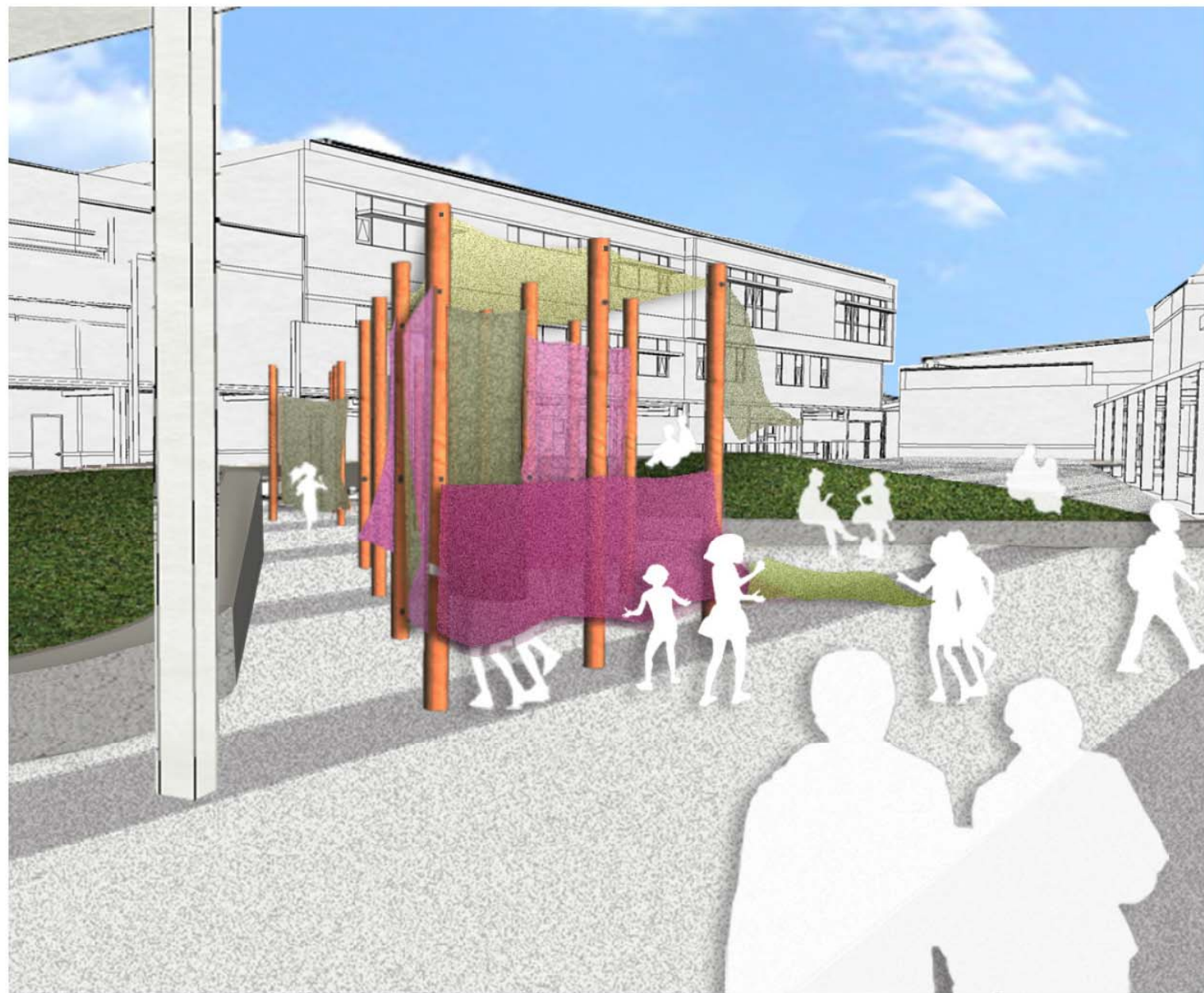




## Key Community Commons Play Concepts

- Rubberized ground surfaces, berms, and poles accommodate a variety of play activities
- Unstructured play opportunities – encouraging student creativity
- Direct access to Art Classrooms, Library and Multi-use room – connected learning





## Key Community Commons Play Concepts

- Rubberized ground surfaces, berms, and poles accommodate a variety of play activities
- Unstructured play opportunities – encouraging student creativity
- Direct access to Art Classrooms, Library and Multi-use room – connected learning





## Key Concepts

- Berms provide seating and natural play surfaces
- Accommodates a variety of structured play opportunities
- Dedicated K8 connection to school gym, separate from High School access

5-8 PLAY & PHYSICAL EDUCATION

ECCL | EMERYVILLE, CA

03.07.2013

MFLA | DESIGN DEVELOPMENT



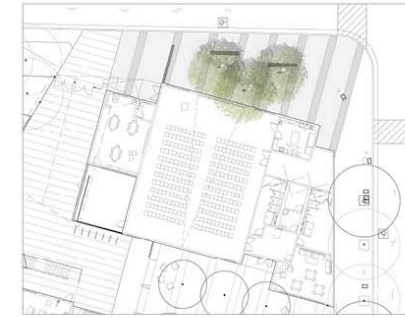
# Flexible Play Fields

City-School Committee  
ECCL  
Design Development

March 7, 2013

14

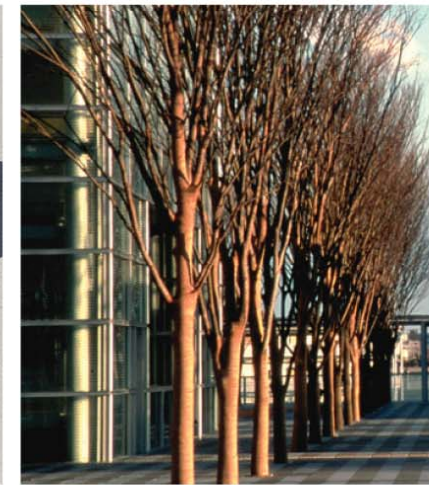




THE CROSSROAD OF  
COMMUNITY AND  
LEARNING

## Key Concepts

- **Gateway Plaza announces arrival in Emeryville**
- **Seating & trees**
- **Signage for ECCL events**
- **Structured, orderly surface paving patterns**
- **Creates a “front porch” for the entire ECCL campus**



SAN PABLO AVE & 53RD STREET PLAZA  
ECCL | EMERYVILLE, CA

03.07.2013

MFLA | DESIGN DEVELOPMENT



# Gateway Plaza – 53<sup>rd</sup> & San Pablo

City-School Committee  
ECCL  
Design Development

March 7, 2013





53RD STREET & BIOFILTRATION LANDSCAPE  
ECCL | EMERYVILLE, CA

03.07.2013  
MFLA | DESIGN DEVELOPMENT

## Key Concepts

- **Widened landscape featured at edge of 53rd Street greenway, celebrating legacy of Temescal Creek**
- **New street trees define edge of ECCL campus**
- **Biodiversity and species habitat**
- **Biofiltration swales treat stormwater runoff**



March 7, 2013

# 53<sup>rd</sup> Street Greenway

City-School Committee  
ECCL  
Design Development

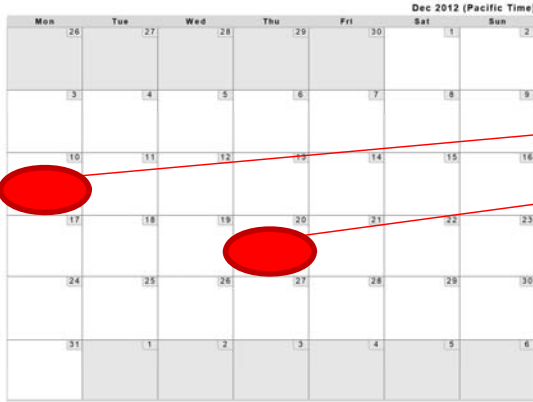


# ECCL – Engagement & Design Process Review

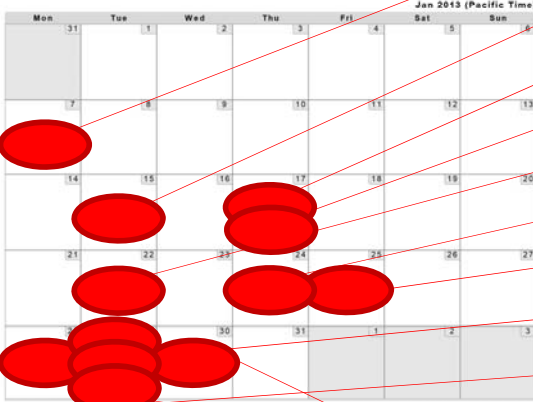




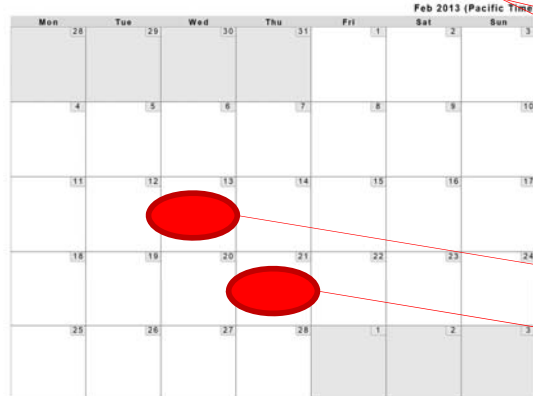
## December



## January



## February



## Focus Meetings

P.E. Teachers  
H.S. Administration

Digital Mock-ups Distributed to Staff  
Community Services Staff

Library Tour

H.S. Art

Elementary School Teachers

Learning Centers

H.S. Music

Elementary Science

H.S. Administration

H.S. Teachers

H.S. Science

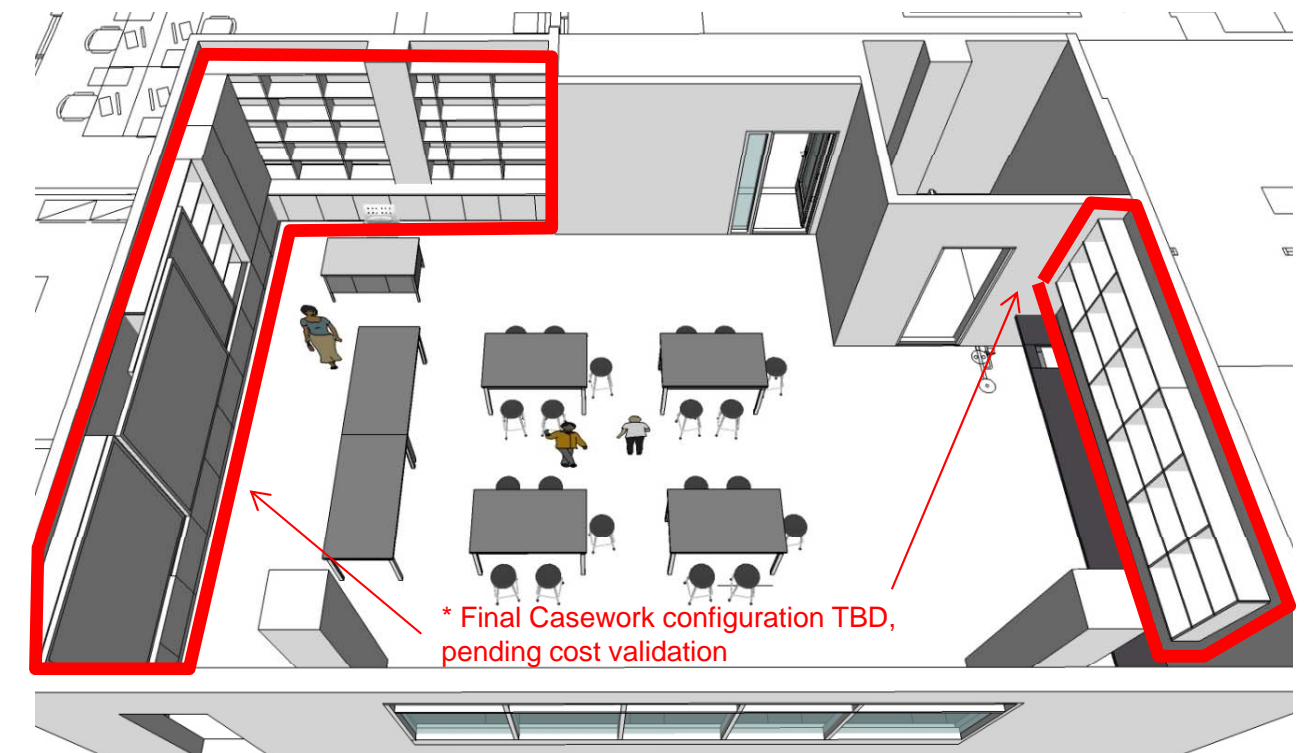
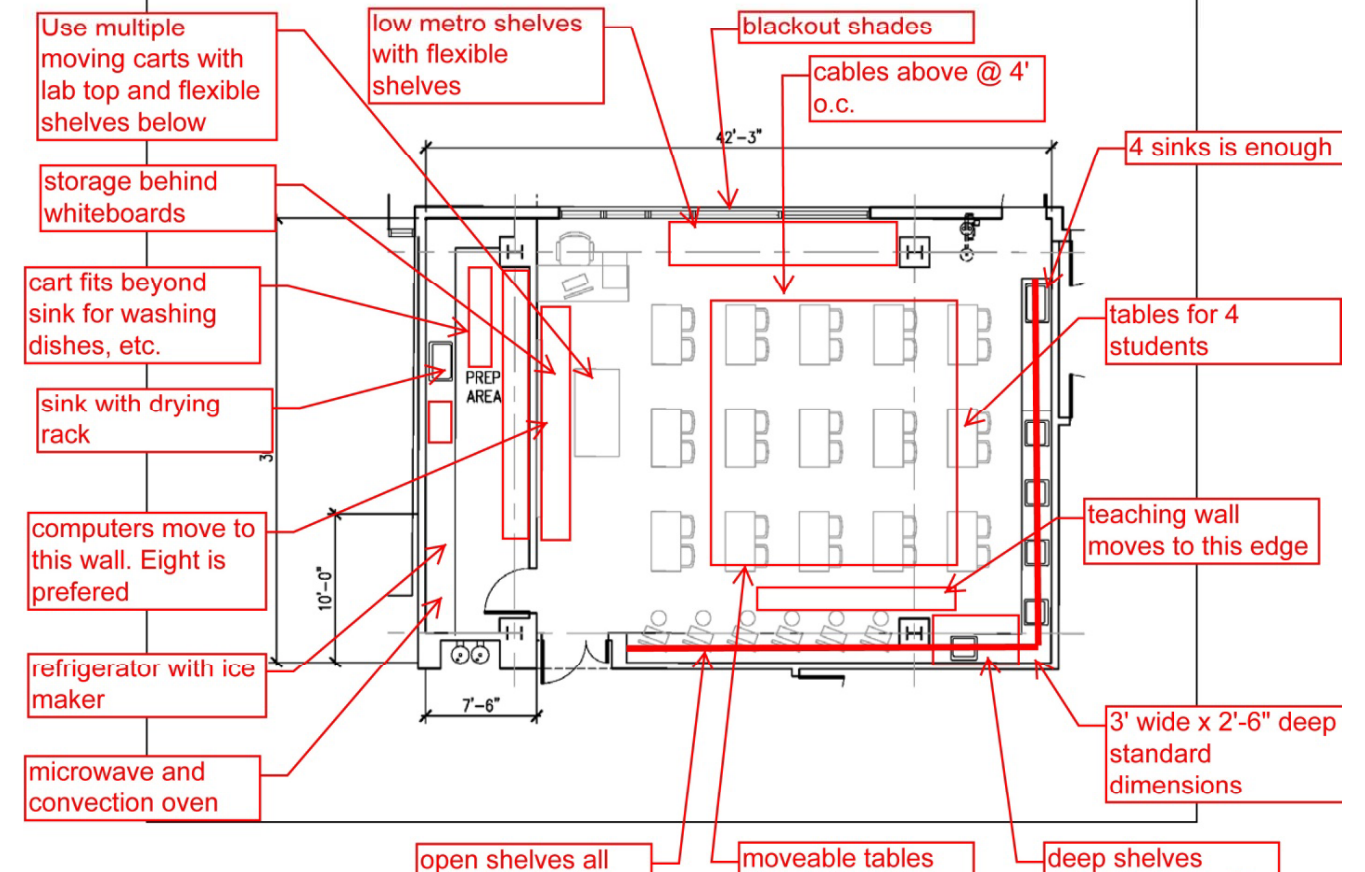
H.S. Gym

Library Tour

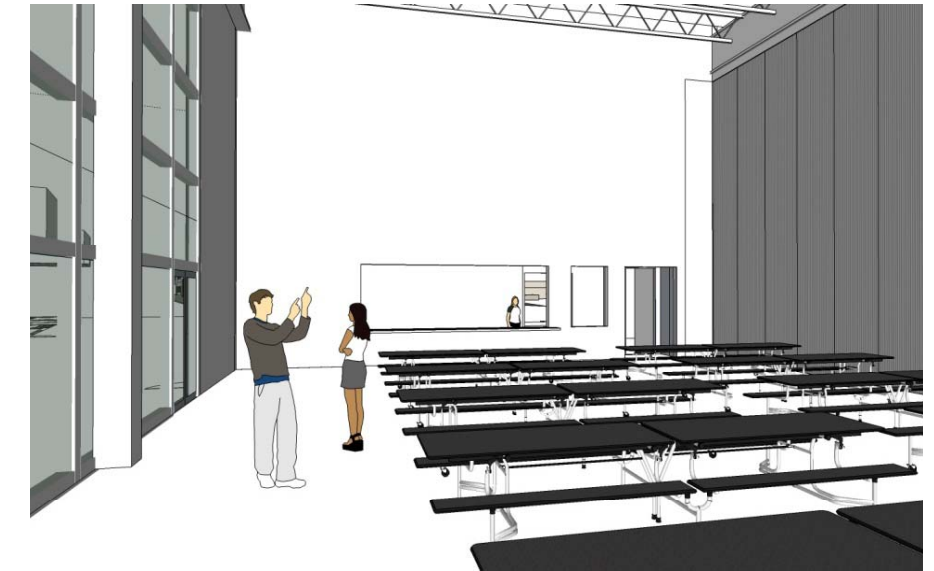
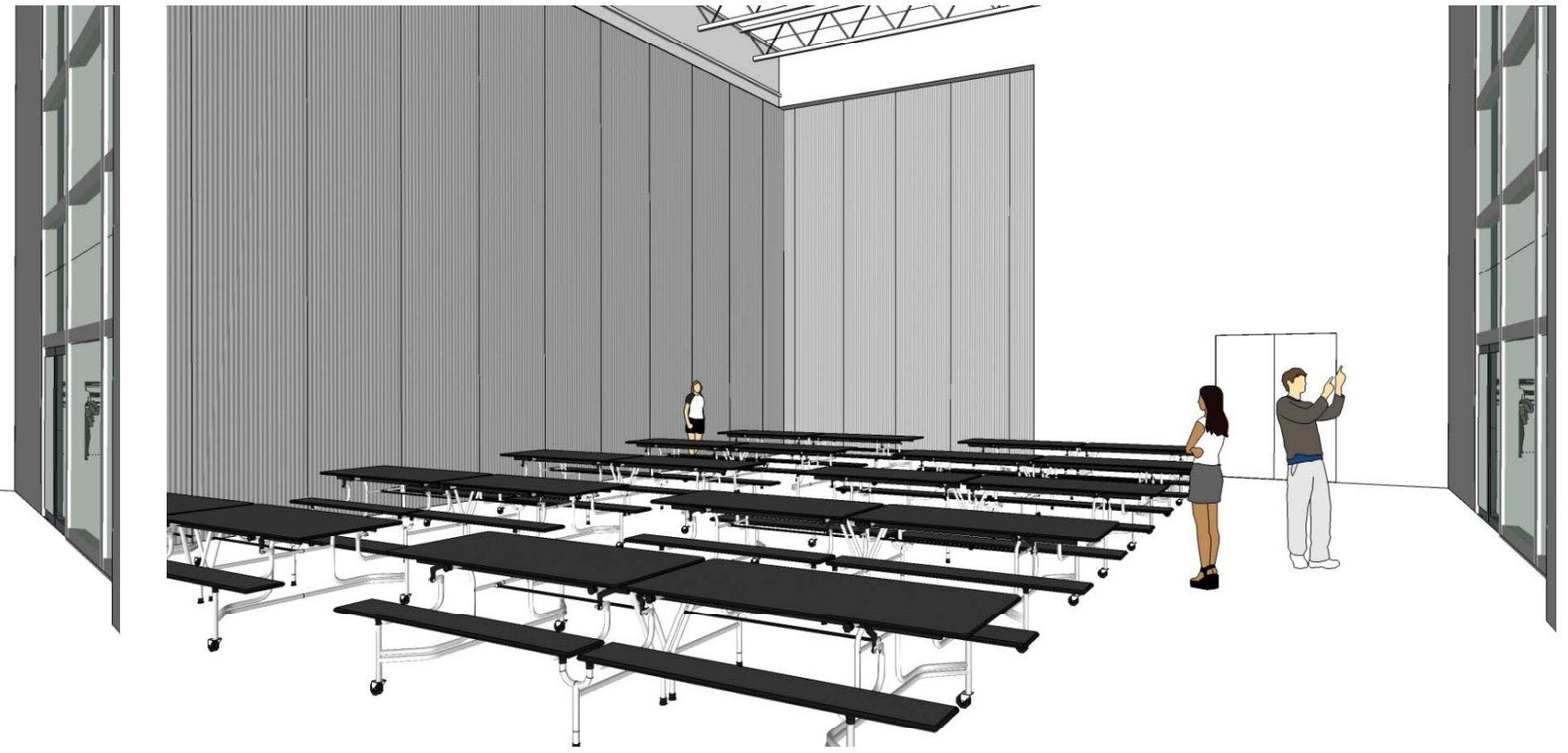
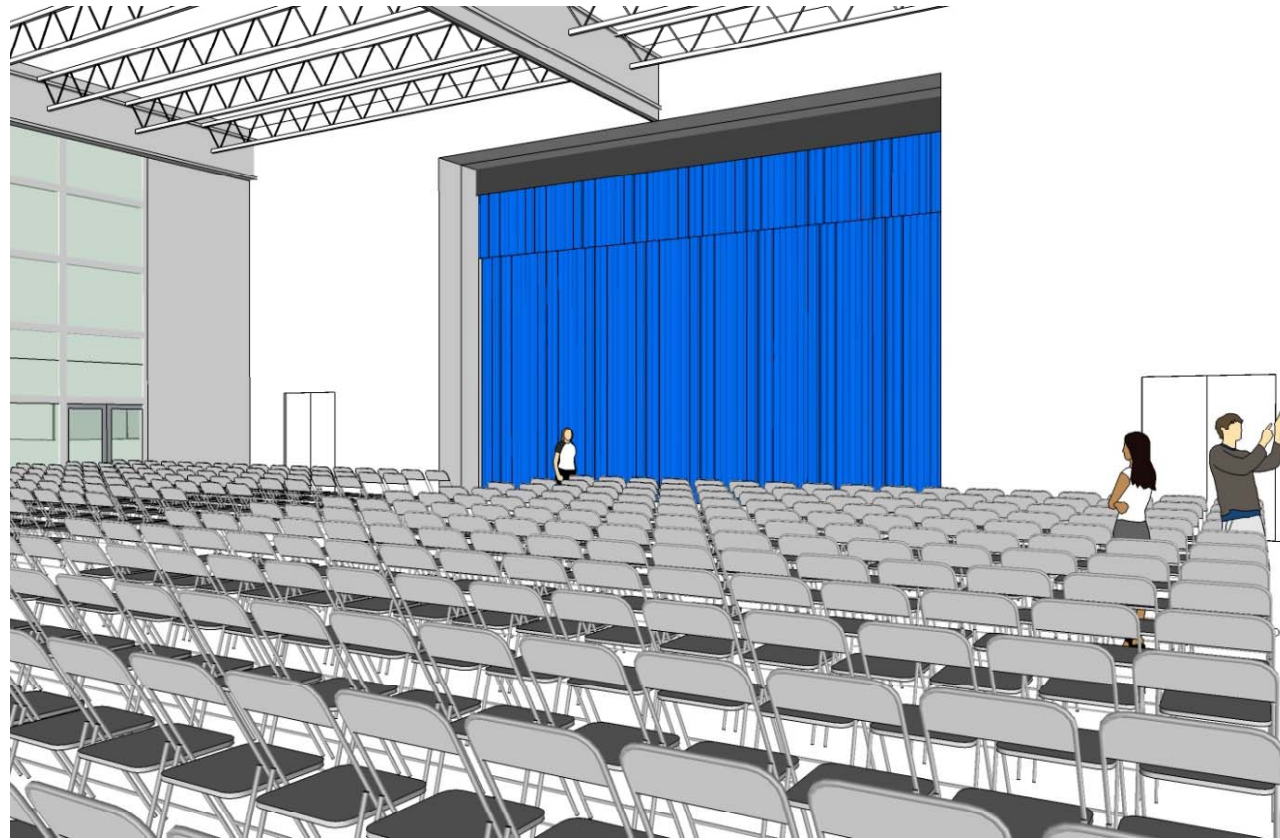
IT/Data Staff

H.S. Science

Grades K-8 Science Center Space Prototype







**SCHOOL MULTI-USE ROOM**

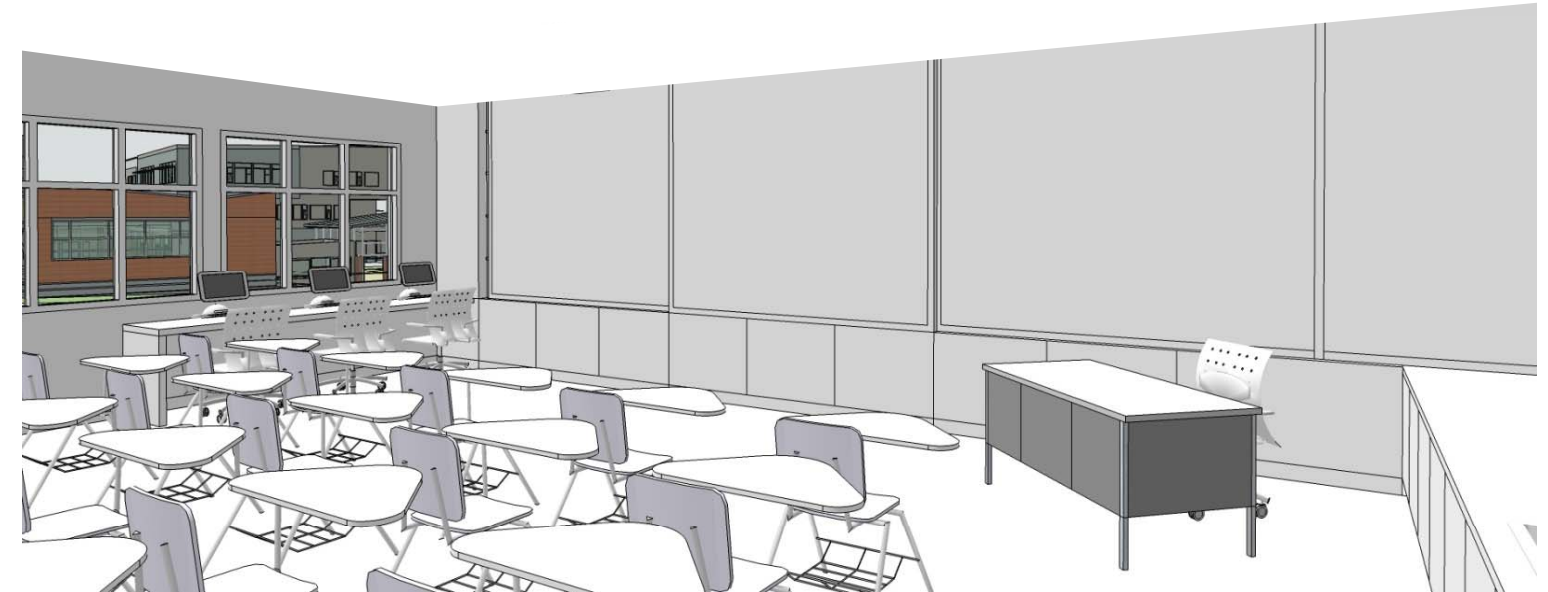
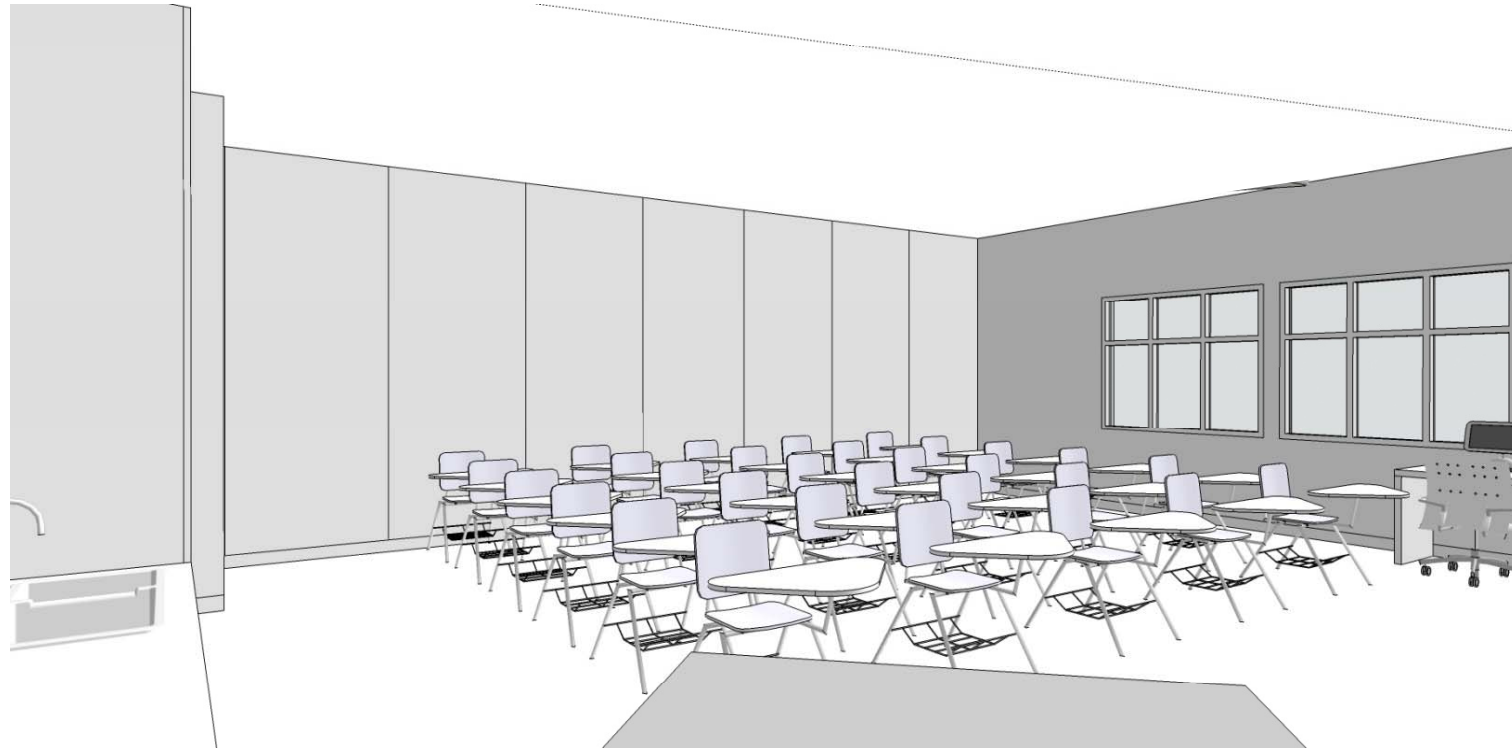


## FACULTY AND STAFF ENGAGEMENT– DIGITAL MOCK-UPS

**City-School Committee  
ECCL  
Design Development**

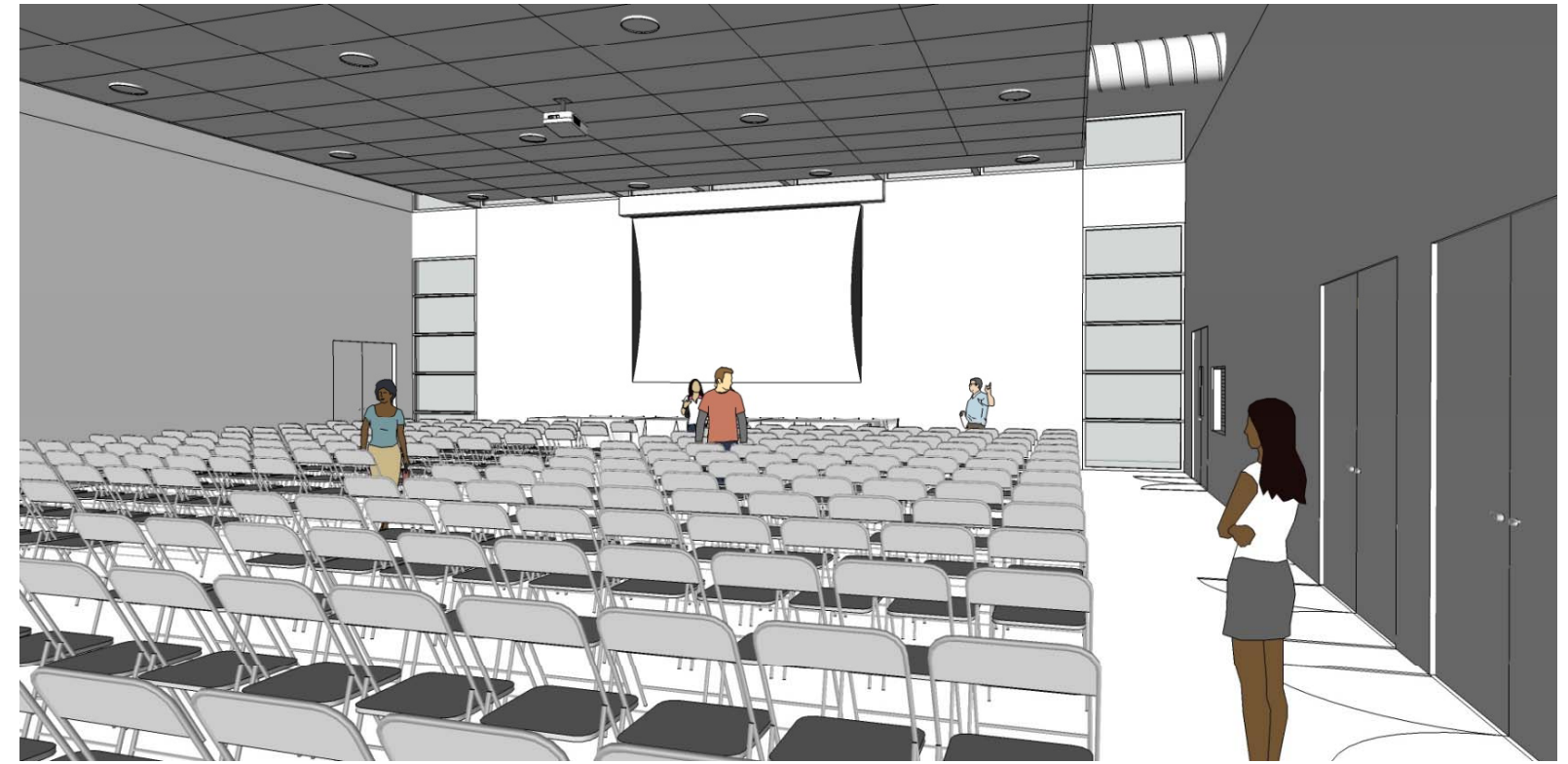
March 7, 2013





K-12 CLASSROOMS

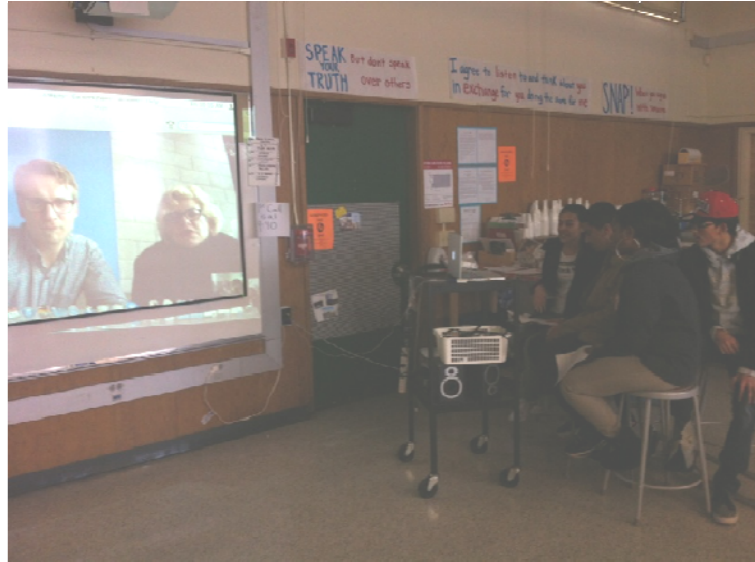




**COMMUNITY SERVICES**



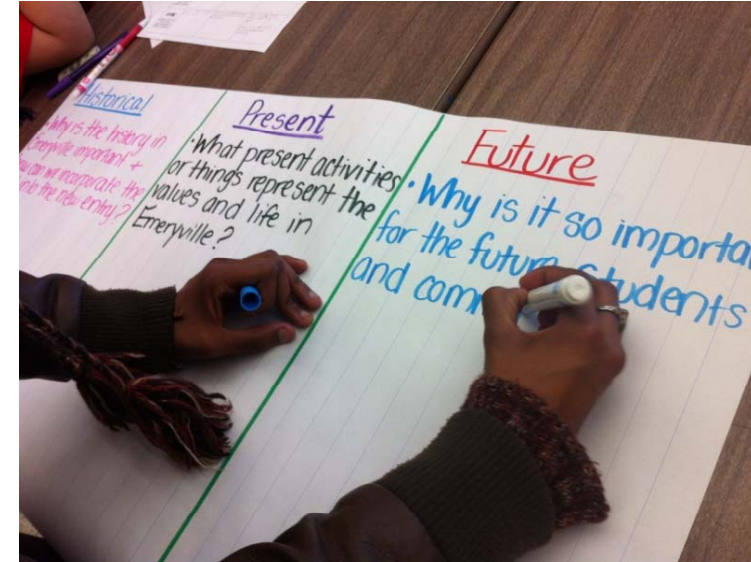
# Student Engagement: Incorporating Youth Perspectives



Skype design session w/ ESS Art Class



Nexus Mentor/student collaboration



Connecting to the ECCL Vision



Gallery Walks at Anna Yates Elementary

## 2012-13 Nexus Partners engagement activity:

- Collaboration with ECCL Youth Fellows
- Youth Participation in Community Design Workshops
- Design Gallery Walks at Anna Yates Elementary
- ESS 3D Art & Design Class – ECCL Student Projects
  - Nexus Design team Mentors – Collaboration w/ ESS students on semester-long art projects about ECCL
  - Youth Presentations to EUSD Board Members
  - Generating Ideas and Concepts for Integrating Public Art into the design of the ECCL



Youth Fellows present at Community Design Workshop #7



## Youth Engagement Process

City-School Committee  
ECCL  
Design Development

March 7, 2013



# Community Canvas: A **Nexus** of Information

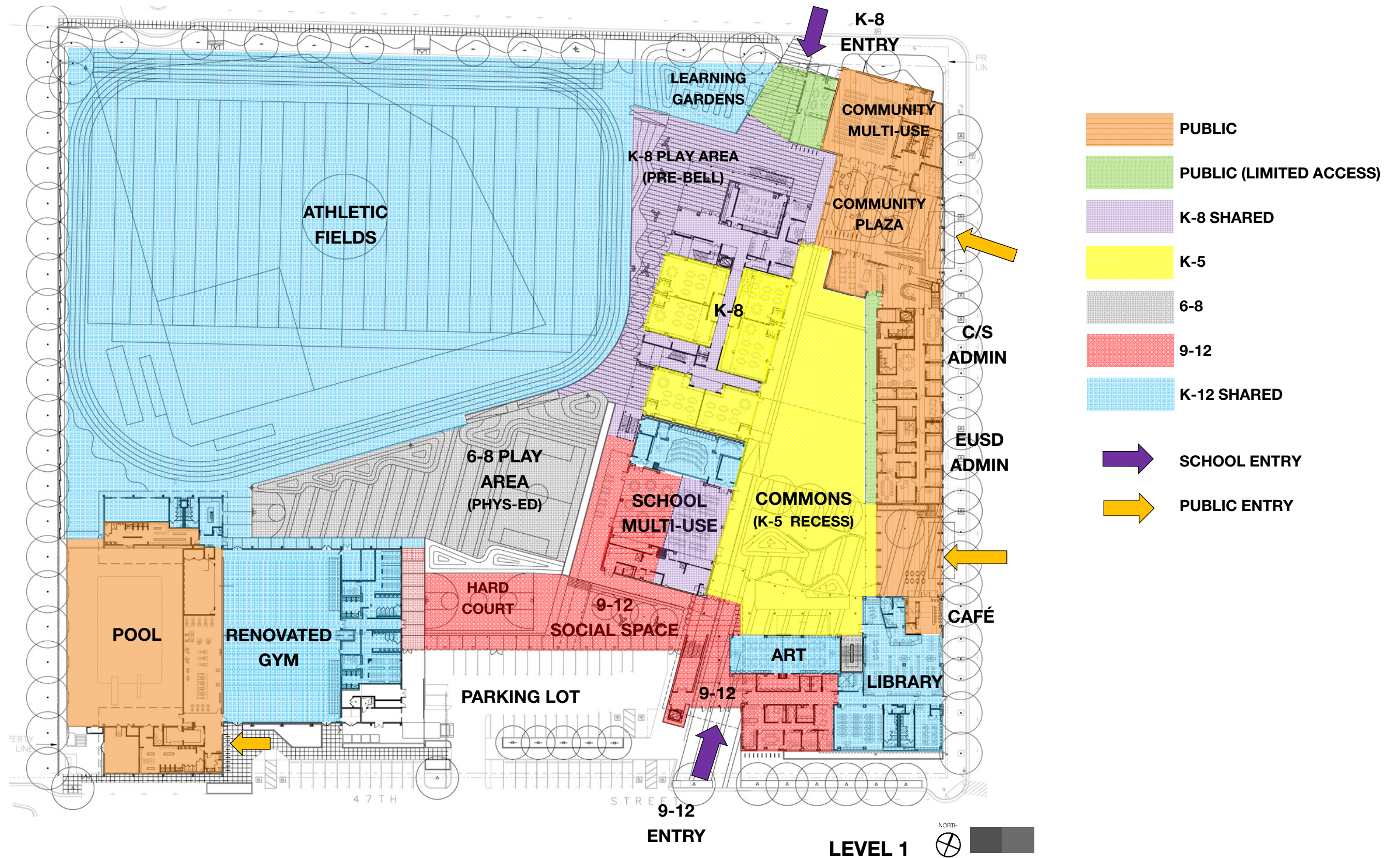


## Results from November Community Presentation:

- Evolved from “Community Wall” to “Community Canvas”
- Integration of Public Art and Emeryville History
- Potential Themes for development:
  - The Arts – Digital, industrial, graphic, creative & Performance
  - Educational “Manifestations” – Geometry, Astrophysics, etc.
  - Ecology & Sustainability



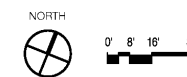
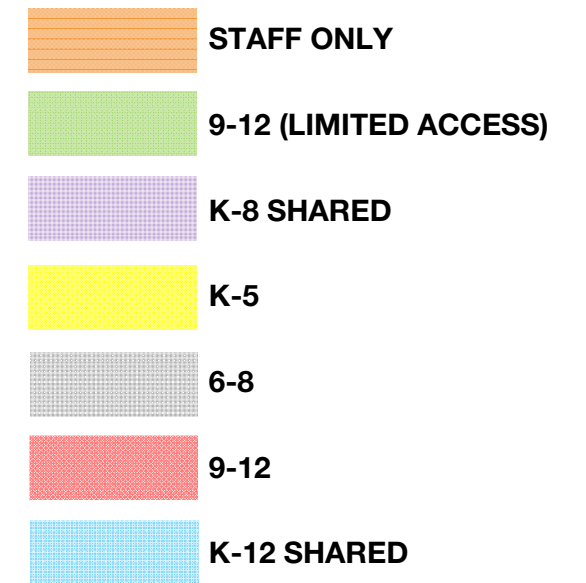
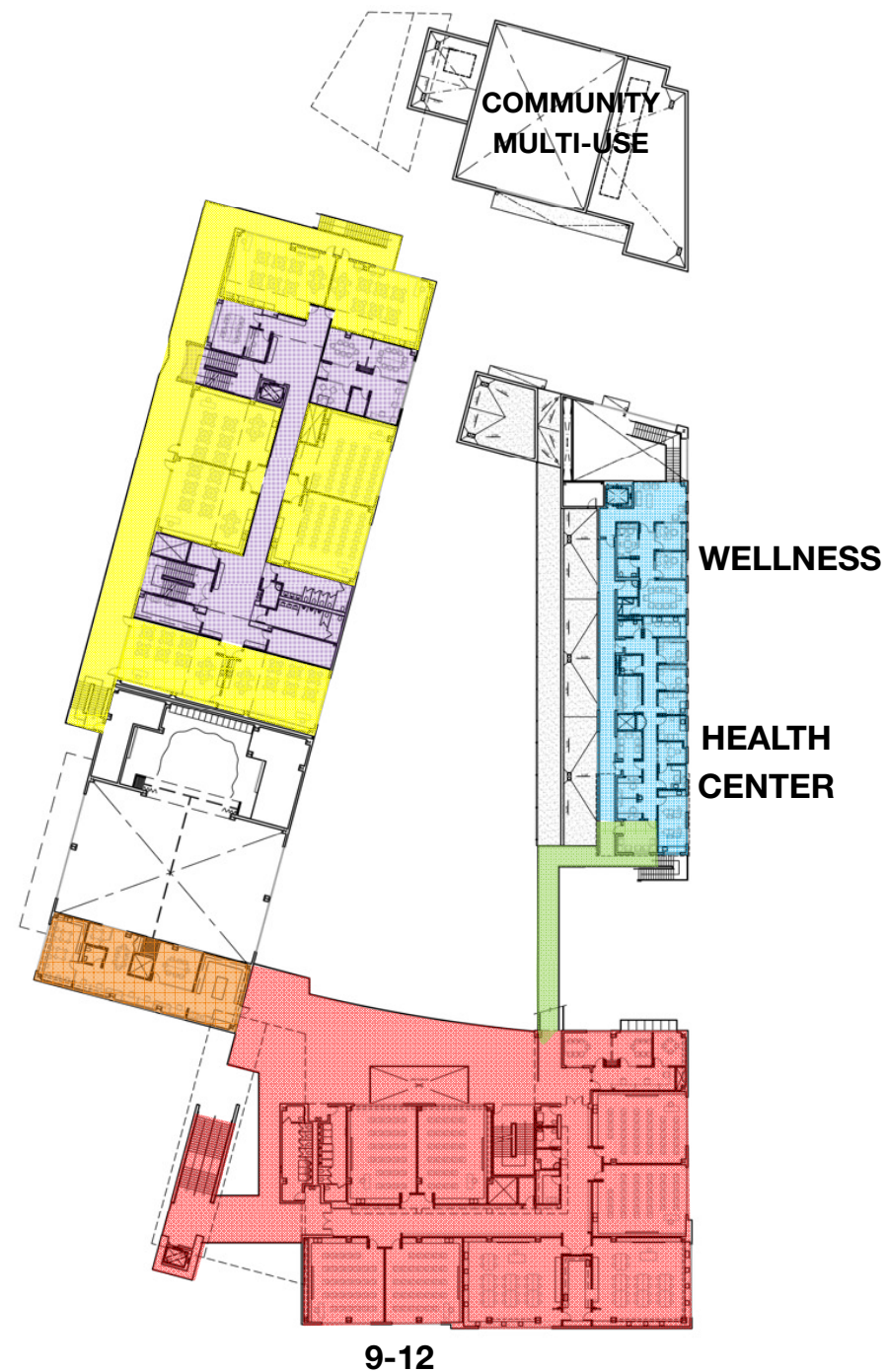
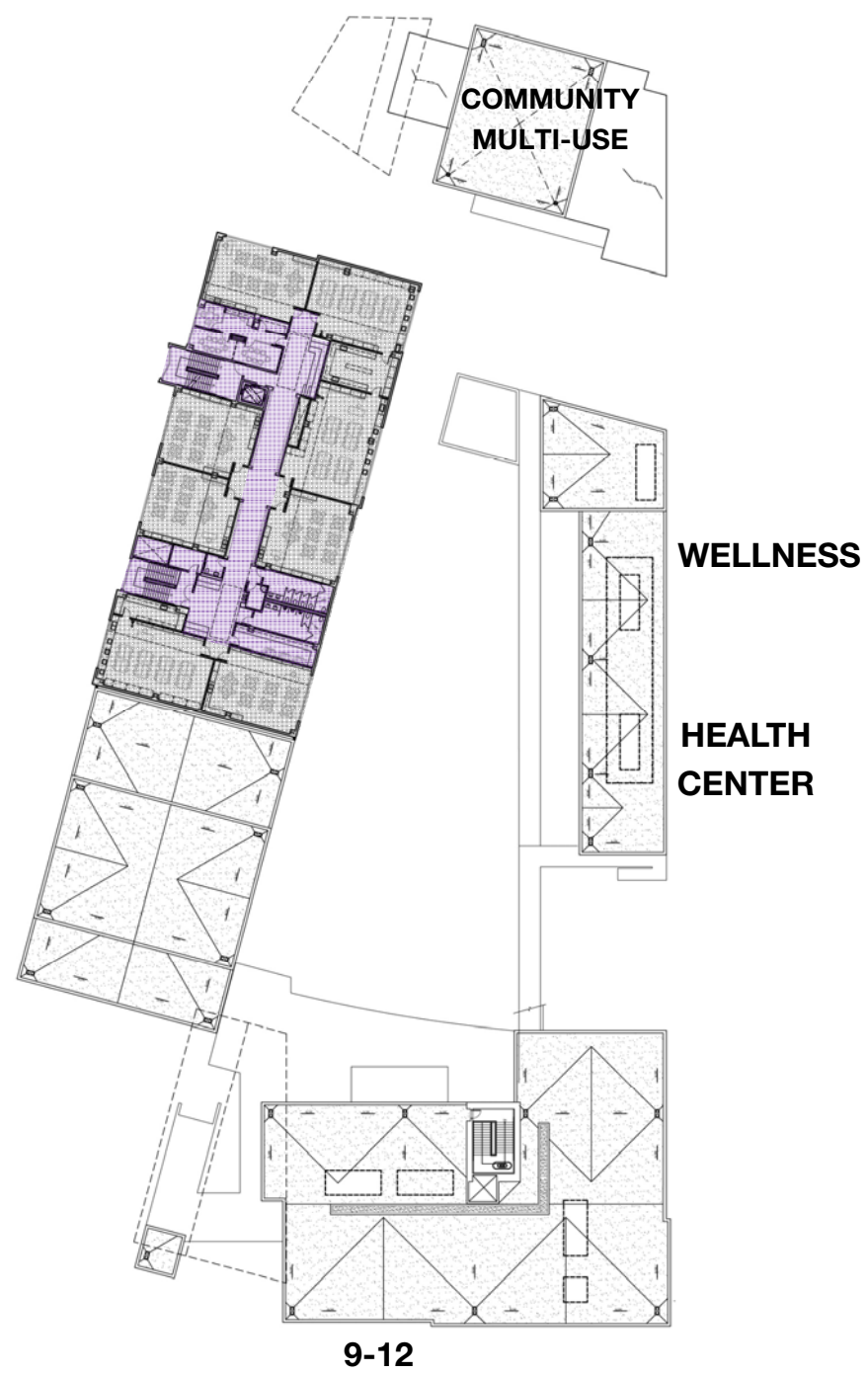




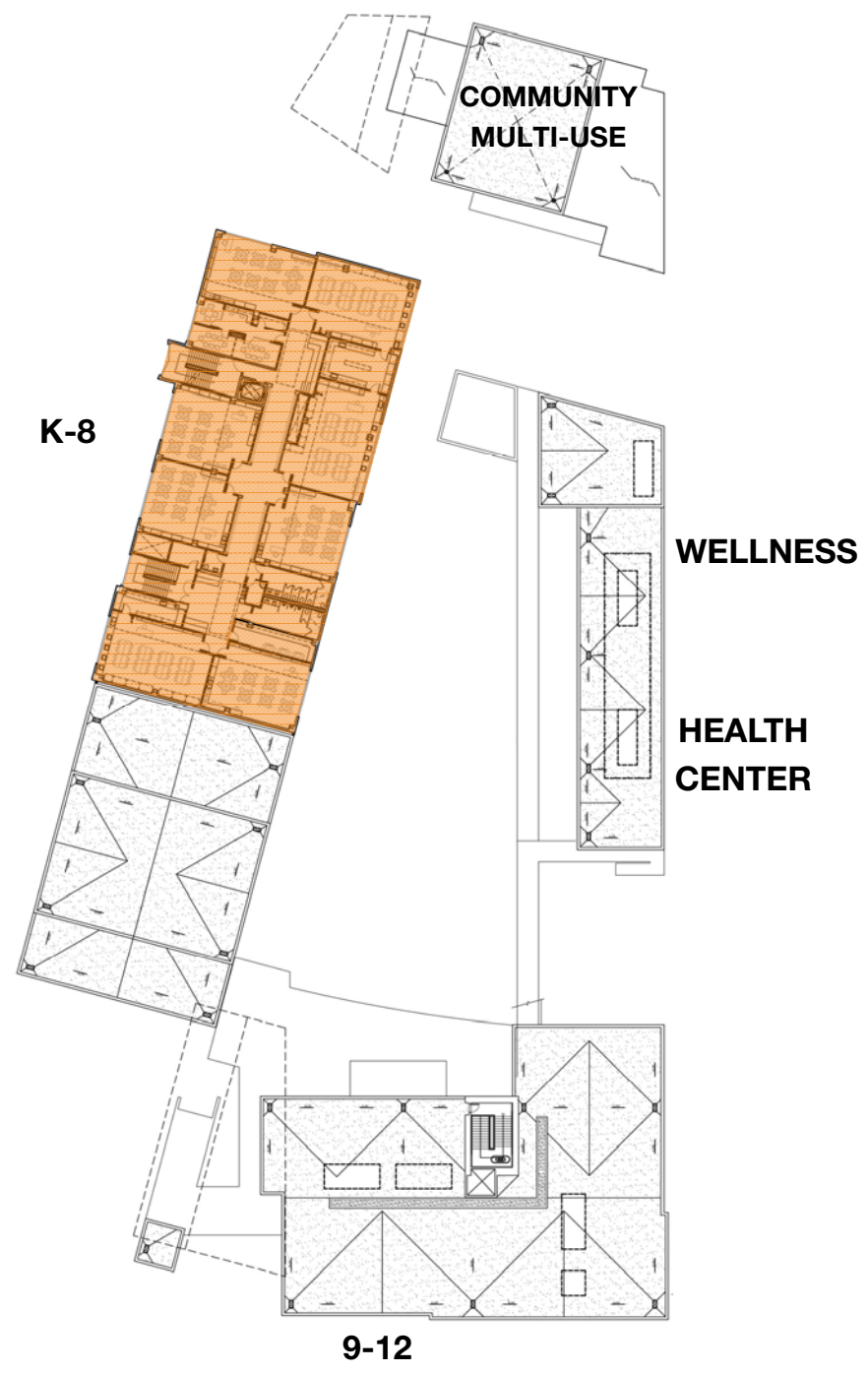




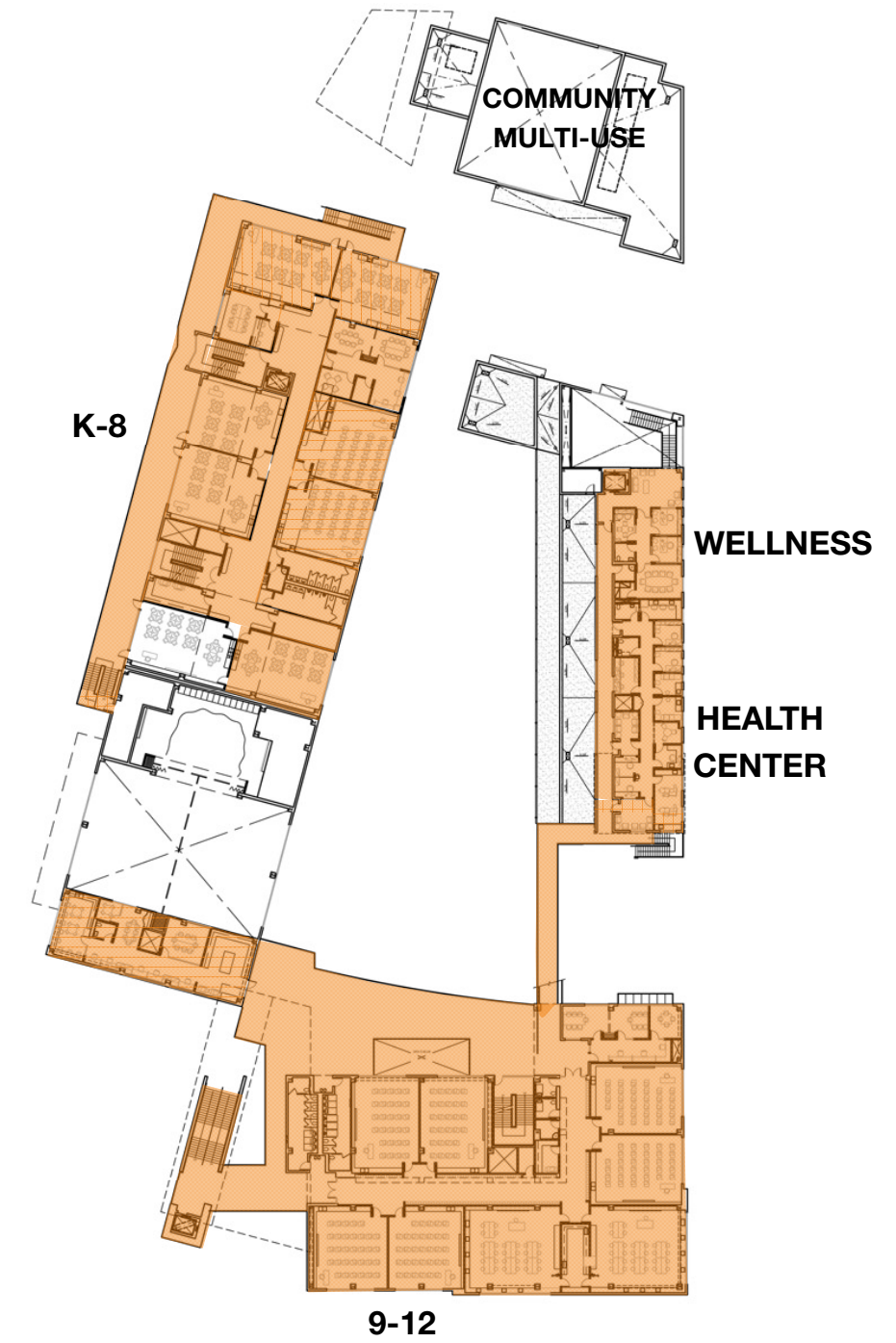






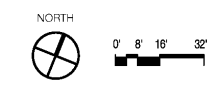


**LEVEL 3**



**LEVEL 2**

 **PUBLIC**



# SITE USE DIAGRAM – NON-SCHOOL HOURS

**City-School Committee  
ECCL  
Design Development**

March 7, 2013



# ECCL Project Time Line





# Nexus Partners: Upcoming Activities

- DD Approval - ECCL
  - 4/10 EUSD First Reading
  - 4/24 Board of Trustees Vote
- Student Engagement
  - ESS Art and 3D Design Class
  - June City/School Presentation
- Community Presentation
  - April 20 @ Ralph Hawley 10am-noon
  - ECCL Design Exhibit & Physical Model
  - Exploring ideas for Educational Manifestations







# EMERYVILLE CENTER of COMMUNITY LIFE



March 7, 2013

nexus partners

City-School Committee  
ECCL  
Design Development